
BLAKE OVERSMITH
Stan Miller Yachts
2805 Dickens St., Suite 105
San Diego, CA, US
Office: 619-224-1510
Mobile: (619) 665-7398
blake@stanmiller.com

2008 Hatteras Motoryacht

Boat Type: Motor Yacht

Address: San Diego, CA, US

Price: \$1,749,000



OVERVIEW

"MISS SEALANEOUS EXPENSE II" is hull number 1 of the Hatteras 72 motor yacht line. She was debuted in the 2007 Lauderdale Show and purchased the day the show opened. As her name hints at, no expense was spared in outfitting and on her maintenance over the years by the original owner and original captain since day one.

Estate sale! Must be sold!

SPECIFICATIONS

Basic Information

Manufacturer:	Hatteras	Vessel Name:	Miss Sealaneous Expense II
Model:	Motoryacht	Boat Type:	Motor Yacht
Year:	2008	Hull Material:	Fiberglass
Category:	Power	Hull Type:	
Condition:	Used	Hull Color:	
Location:	San Diego, CA, US	Designer:	
Available for sale in U.S. waters:	Yes	Flag of Registry:	

Dimensions & Weight

Length:	72 ft - 21.95 meter	Draft - max:	5 ft 4 in - 1.62 meter
LOA:	72 ft - 21.95 meter	Bridge Clearance:	-
Beam:	20 ft 2 in - 6.15 meter	Dry Weight:	160000 ft - 48768 meter

Engine

Make:	Caterpillar	Engine Type:	Inboard
Model:	C32	Drive Type:	
Engine(s):	2	Fuel Type:	Diesel
Hours:	1741	Horsepower:	1652 (Individual), 3304 (combined)
Cruise Speed:	22 MPH - 19.12 KTS	Max Speed:	26 MPH - 22.59 KTS
Range:	-	Joystick Control:	No

Tank Capacities

Fuel Tank:	2200 gallons - 1 tank(s)	Holding Tank:	330 gallons - 1 tank(s)
Fresh Water Tank:	150 gallons - 2 tank(s)		

Accommodations

Total Cabins:	5	Crew Cabins:	1
Total Berths:	-	Crew Berths:	1
Total Sleeps:	1	Crew Sleeps:	1
Total Heads:	5	Crew Heads:	1
Captains Cabin:	-		

DESCRIPTIONS

Vessel Walkthrough

Beginning aft on the swim platform, port and starboard stairs lead up to the teak aft deck, which features a molded-in cushioned settee and large teak high gloss table. To port is a stairway leading up to the flybridge and boat deck. Wide, full walk-around side decks with bulwarks lead to the bow.

The salon is entered through a stainless steel framed sliding glass door. Flooring on the interior main deck is carpet with 2 custom carpet runners. Immediately to port is a granite top table height tiered wet bar with two bar chairs. Behind the bar the custom black granite tile floor of the bar is sunken twelve inches. Behind the bar outboard are custom storage cabinets for glass and bottle storage. Directly below the bar inboard is additional storage and a Scottsman Ice Machine. A door inside and aft of the bar leads to a stairwell down to the Fifth guest or captain / crew stateroom and the engine room. A 42" TV is mounted above the bar for visibility throughout the salon. On the starboard side of the salon is a swivel barrel chair and full size sofa with ample storage underneath. Forward to starboard is a custom built zebra wood storage cabinet with 2 drawers followed by the day head. Forward on the port side is a custom end grain mahogany round dining table with four chairs, bar chairs can add to the seating for 6.

Forward of the salon, up one step is the galley which has been customized with a TV and added trash compactor. The large forward dinette has ample seating and great visibility. There are port and starboard access doors to the side decks.

Forward to starboard is a stairwell leading down to the owner and guest staterooms. Aft is the full beam master stateroom with a king size bed, his and hers heads with a central custom white granite and onyx inlaid shower. Custom high gloss head board details. Across the companionway to starboard from the master is a guest stateroom with upper and lower bunks. Forward to port is the guest head with round stall shower. Across to port is the port VIP stateroom with a queen size bed. All the way forward is the forward VIP guest stateroom with a queen size berth and ensuite head and stall shower.

There are two access stairways to the open flybridge from either the aft deck or the galley, both have custom handrails.

The engine room and aft guest / captains / crew stateroom are accessed from the transom or the salon behind the bar.

Salon

- 42" Pioneer flatscreen TV
- Surround sound audio system w/(5) overhead speakers and sub-woofer
- Custom programmed RTI remote for salon AV
- Panasonic phone networked to other rooms
- Brass ships clock and barometer
- Sunken wet bar w/Scottsman Ice Maker, (2) bar chairs, glass & bottle storage cabinetry outboard and below bar counter
- Swivel Barrel chair, recently re upholstered
- Hunter Douglas manual window shades on all windows and aft doors, recessed in valances
- All air conditioning routed above windows in custom soffits
- Leather upholstered sofa w/storage underneath
- AJ Originals custom end grain mahogany 60" round dining table & (4) dining chairs
- Forward port side china & glass display cabinets (2) above, (3) cabinets below
- Forward starboard side custom zebra wood storage cabinet with 2 drawers
- Main deck day head w/black granite tile floor, Plexiglas mirrored ceiling, onyx counter, white sink & Headhunter Royal Flush toilet, large oval port window and manual shade
- Salon lighting controlled by a Lutron dimmer
- Original paintings, one large one to starboard, forward; one small one to port, forward
- Custom Carpet runner covers, new 2018

Galley

- Sub Zero 685, 42" side by side stainless steel refrigerator & freezer with ice maker and water dispenser in door
- Kitchenaid glass 4 burner cooktop, black
- Whirlpool conventional & convection oven, black
- Sharp convection microwave, black
- Fisher and Paykel drawer dishwasher, stainless, new 2018
- Black Granite counter tops
- Franke under-mounted double stainless steel sink
- Badger garbage disposal, new 2018
- Whirlpool Trash compactor, black
- Granite top center galley island with cabinets and drawer storage
- Starboard side storage pantry, pull out storage and cabinets above
- Large forward dinette with black granite top, 2 tone upholstered seating surfaces, recently reupholstered
- Port & starboard pantograph doors to side decks
- Custom Thomas Marine stainless handrails, 1 for stairs leading below and 1 for stairs leading to fly bridge
- 20" Sharp Aquos LCD TV in custom wood frame, mounted above galley center island
- RTI custom programmed remote for galley AV
- Panasonic cordless phone

Master Suite

- King-sized berth with custom upholstered and high gloss wood headboard
- Mattress, spread, throw pillows, pillow shams, mattress pad and sheets; lift-up cedar-lined storage beneath
- (2) Opening portlights and (4) additional fixed portlights
- (1) Cedar-lined closet w/ double doors and automatic lights
- (2) Nightstands w/ drawers
- Dressers with drawers, port and starboard
- 32" Sharp Aquos LCD TV, flush mounted into whisperwall
- Stereo speakers in ceiling and subwoofer in closet
- Custom programmed RTI remote for master AV
- DVD player in closet
- Panasonic phone networked
- (2) lamps above night stands
- White Carpeted sole
- Master head: 2 Headhunter heads, midship white granite shower with custom onyx inlays, white granite floors and counters, plexi mirrored ceilings, white sinks, upholstered bench at makeup counter

Port Forward VIP Guest Stateroom

- Queen size island berth w/ mattress, lift-up cedar-lined storage beneath & (2) storage drawers, recently replaced bedspread and pillow shams
- Side storage cabinets to right and left of headboard
- Cedar lined hanging locker
- Carpeted sole
- DVD player in closet
- 20" Sharp Aquos LCD TV flush mounted into whisperwall
- Stereo speakers in ceiling

- Custom RTI remote for port VIP AV
- Door that connects to port head w/stall shower, Plexiglas mirrored ceiling, white granite tile floor & blue granite countertop

Forward VIP Guest Stateroom

- Queen size centerline island berth w/ mattress, lift-up cedar-lined storage beneath & (2) storage drawers, recently replaced pillow shams and bed coverings
- Mirrored forward with upholstered headboard
- Overhead hatch w/ shade/screen
- Side storage cabinets, port & starboard
- Cedar lined hanging locker
- Carpeted sole
- 20" Sharp Aquos LCD TV flushmounted into whisperwall
- Stereo speakers in ceiling
- DVD player in closet
- RTI remote for Forward AV
- Full length mirror on door
- Ensuite head w/stall shower, Plexiglas mirrored ceiling, white granite tile floor & marble counter

Starboard Guest Bunkroom

- Upper & lower bunks w/ storage beneath lower bunk
- 20" Sharp Aquos LCD TV in custom wood frame
- Stereo speakers
- RTI remote for bunk room AV and custom wall mount
- Bed spreads, pillows & shams
- Hanging locker closet

Guest Head

Located on the port side of the companionway forward of the port VIP is the guest head.

- Plexiglas mirrored ceiling
- Storage cabinets under sink and above counter
- Blue Granite countertop w/bullnose edge
- White granite tile floor
- Round stall shower w/sliding glass door
- Headhunter Royal Flush toilet

Forward Companionway

- Washer / Dryer

- Central Vac system

Aft Guest/Crew Stateroom/Aft Utility Area

The aft stateroom is accessible from the salon or transom door. With all of the amenities of the forward staterooms it is perfectly suited for guests, captain and or crew.

- Queen size berth with storage underneath
- Custom fold down bunk
- Built-in nightstand w/drawers
- 20" Sharp Aquos LCD TV in custom wood frame
- Closet
- Stereo speakers in ceiling
- Panasonic phone networked
- DVD player
- Custom RTI remote for captains AV and custom wall mount
- Northstar 6100i
- To Starboard, head w/stall shower, Plexiglas mirrored ceiling, Amtico teak & maple floor, Headhunter Royal Flush toilet, vanity w/ mirrored cabinets
- Amtico flooring throughout aft area
- Custom teak steps from aft swimstep and from salon bar area
- Amana Chest freezer
- Washer / dryer, Whirlpool, replaced 2018
- Controller for underwater lights, new 2018
- Transom door, new seal and painted 2018
- Custom Thomas Marine stainless handrail from salon bar area down

Aft California Deck and Swim Platform

- Aft molded fiberglass settee w/cushions
- White stamoid seat and table covers
- Rectangular high gloss teak table
- Aft deck side boarding gates, customized with lower bar
- Freshwater washdown connection
- Hatteras fold out wing control station on starboard side
- Teak deck
- Starboard molded fiberglass stairway to bridge w/teak steps & stainless steel handrails
- Port & starboard molded stairs to swim platform w/teak steps & stainless steel handrails
- Non-skid swim platform w/stainless steel hoop rails
- Stainless rails customized by Thomas Marine to "piggyback" when center ones are removed, Custom boarding gate with lower step, also additional rails to port and starboard and above lower rubrails
- Watertight transom door, painted and new seal 2018
- 3 Lumishore Underwater lights, LED, full color, new 2018
- 2 Deep sea underwater lights, LED, blue, 24VDC
- 24VDC Maxwell 2200 Mooring winches with foot switches, 1 port, 1 strb
- Stainless steel flagpole

Flybridge and Boat Deck

The flybridge is accessed from either the aft deck or from the galley. It features a large centerline helm station with 4 large displays, forward, served by 3 platinum Pompanette chairs on stainless steel pedestals with fold down foot rests. A wet bar with three stools is behind the helm. Molded fiberglass seating, port and starboard aft includes lots of storage beneath. A custom Pipewelders marine hardtop with SeaCrylic panels. Custom dropdown TV above bar.

The aft boat deck includes lots of storage in cabinets and a Gaggenau double barbecue grill with molded, hinged cover. 1500 lb. Steelhead hydraulic davit. Currently the boat deck is setup to carry 2 tenders and a liferaft. Both tender mounts are removable.

- Custom Teak deck inside flybridge
- Custom Pipewelders Drop down TV, Sharp Aquos
- Added stainless-steel grab rails and custom Pipewelders vertical hardtop stanchions
- SeaCrylic full enclosure, new 2017 by P&R Canvas FL
- (3) Platinum Pompanette adjustable helm chairs w/stainless steel pedestals & footrests
- Hatteras factory Painted aluminum arch with mast for anchor light
- Custom covers for helm chairs, helm, and aft seating
- Port & Starboard molded fiberglass lounge seating w/custom Sunbrella covered pillows, cushions and storage beneath
- Black Corian table for starboard seating
- Plexiglass access door to galley stairs below, custom handrails
- Clarion M606, Audio system control with LCD keypad on helm and 4 speakers, upgraded 2018, connected to direct TV audio, Bluetooth and connected to simrad processor for XM, ipod, etc.
- Bar with sink, black corian top & storage cabinets beneath; whirlpool Ice Maker and U-line Refrigerator
- (3) bar stools, sunbrella
- Custom 3 color recessed lights in hardtop
- Custom molded in boat deck AC floodlights
- Gaggenau double grill, boat deck
- Steelhead SM 1500R davit w/retractable boom & power rotation, new line 2018
- Custom Pipewelders hardtop access ladder
- Stainless steel bar footrest rail
- Tenders: 14' Aquapro aluminum bottom inflatable, setup "panga style" with tiller steer via 40HP Yamaha 4 stroke outboard, custom stainless step and rail, custom beach wheels; 10' Walkerbay RID sailing dingy with inflatable tubes, both have white stamoid covers
- Elliot liferaft, custom stainless mount and cover

Deck Equipment and Hardware

- Welded and polished stainless steel anchor chute, customized to secure claw style anchor
- 50 KG stainless claw AXE anchor with 275' of 3/8 chain, marked every 50'
- Fortress FX55 stern anchor with 250' of 1' double braid line
- Maxwell VWC-4000 hydraulic Windlass w/deck mounted controls
- Polished stainless steel cleats through bolted with aluminum backing plates, added custom stainless rub chocks around cleats to protect paint, etc.
- Walk around side decks with overhead fender storage compartments for 6 fenders
- Stainless Steel flag staff
- Marquipt Tide Ride sea stairs with handrail in hidden storage, starboard side
- Line locker with custom stainless line organizer in walk around storage, port side
- Custom Forward convertible lounge chairs or chair style seating with multi-position adjustable backrests, white mesh material recently replaced
- Courtesy deck lights converted to LED around walkarounds, steps, etc.

- Port & Starboard fender tracks below rub rail, with additional fender cars
- Custom removable and adjustable paddleboard racks that attach to the fender tracks, port and starboard
- Custom drains for forward anchor locker hatches
- Shore power connections on bow, 2 x 100amp, phone/CATV inlet, fresh water washdown connection and dockside water inlet connection

Navigation Electronics and Helm Equipment

- Ritchie Compass, white
- CAT MPD displays
- Simrad display control keypads (4)
- 2 x Furuno Navnet VX2 systems
- Furuno 72 mi open array radar
- Furuno Sounder 50/200khz fishfinder
- Furuno RD-30
- 2 x Icom IC-M604 VHF Radios with Comrod antennas
- VEI Nightvision camera with low light camera and keypad
- ACR spotlight and keypad
- Simrad AP28 Autopilot, upgraded and networked
- 2 Hatteras rocker switch panels for nav-lights, bilge pumps, fuel trans pumps, etc.
- Hatteras gage panel with battery voltage and fuel tank gages
- Clarion stereo remote with display
- Simrad sonic hub music interface for ipod and satellite radio / weather
- 2 x Simrad NSO blackbox processors
- 2 x Simrad OP40 keypads
- Simrad closed array broadband radar, mounted inside empty dome
- All small misc antennas mounted inside empty dome above broadband radar
- Simrad AIS receiver / transmitter
- Sea-fire manual fire pull cable
- ABT Trac Stabilizer control pad
- ABT Trac Bow Thruster control
- CAT electronic controls
- CAT backup panel
- Yacht controller with gears, bow thruster, and anchor winch. 2 remotes
- FCI watermaker remote
- 2 x 12v outlets on port side of helm
- Hatteras monitor
- VHF mic's remote mounted
- Hailer horn on arch
- Dual trumpet horn on arch
- Furuno wind / temp sensor on arch mast, connected to RD-30
- 4 x Simrad 19" displays with all sources available on all 4 displays
 - sources: Navnet 1, Navnet 2, Low light camera, Simrad processors, Night Vision camera, Engine room camera, Cali deck camera, Boat deck camera, Direct TV
- APC UPS for helm AC equipment
- 2x Newmar Voltage converters
- Wireless Remote for autopilot
- Tellular blackbox cell phone with antenna and connected to Panasonic phone system
- Simrad gofree wifi connection
- Navnet and Camera video feeds modulated onto all stateroom TV's

A/V and Miscellaneous Electronics

- Custom mounted APC UPS for AV rack
- Furman power conditioner on AV rack
- Denon receivers for Salon and Master stateroom
- Xantech MRC88 multizone controller / amp and various keypads around boat
- RTI XP-8s processor
- Denon 5 disc DVD player
- Nuvo NV-T2SIR Sirius tuner
- Modulated to all TV's; cameras - engine room, boat deck & aft cali deck; Navnet processors
- RTI iPod dock
- RTI / netgear wifi interface for RTI panel app
- Belkin p19 bluetooth interface for music, receiver located at AV rack
- KVH TracVision HD satellite system recently replaced

Engine Room, Mechanical Equipment

The engine room on the Hatteras 72 Motor Yacht is unmatched by any yacht in this size range, a theme that rings true throughout the whole boat. A true walk in engine room with lots of headroom. Showcasing the engineering Hatteras is famous for, this area will be the envy of almost every owner and captain. Miss Sealaneous Expense II's engine room is immaculate and extremely well maintained. Well lit with abundant room to actually walk around the big CATs, the electrical and plumbing runs are like artwork, everything is clearly labeled and easy to service. All wiring and plumbing zip tied and clamped to a specific measurement as on all Hatteras yachts.

- Twin Caterpillar C32, 1652 hp diesels @ 2300 rpm; 1740hrs port, 1741hrs strb
- Engines Rebuilt in 2012 by CAT, 850hrs since rebuild
- ZF 2360 Transmissions w/ 4:1 Gear Ratios
- American Bow Thruster (ABT) Hydraulic Bow Thruster
- ABT TRAC stabilizers with STAR software upgrade
- Dual PTO's for ABT Hydraulic system
- Caterpillar electronic controls w/ emergency backup panel at F/B helm
- YACHT CONTROLLER wireless remote control, gears, thruster & windlass, 2 remotes
- 4" Diameter Stainless Shafts, serviced 2018
- 8 Blade Nibral 48" x 72" propellers, serviced 2018
- Stainless steel rudders, serviced 2018, new seals and bearings
- SeaStar hydraulic steering with dual pumps, one on each engine, dual coolers
- Electric fuel transfer system, 2 pumps, with filtration and limit switches, added GPI Digital counters on each
- U.L. Marine listed Hatteras fiberglass tanks constructed from fire retardant resin with bronze fittings and coated with fire retardant paint
- Water manifold system with shut-off valves throughout boat
- AC and DC engine room lighting
- DC extraction blower on starboard air box
- FM200 automatic fire suppression system
- Delta T pressure and temperature controlled forced air induction system with 2 large blowers from walk arounds resulting in no hull side engine vents, air boxes reworked and baffled
- Air compressor, replaced 2018
- 110-volt AC oil changing system for engines, generators and gears with Hatteras patented quick disconnects and hoses
- Racor fuel filter/water separator on each generator and dual filters on engines
- Electric fuel priming pumps on main engines
- Bright white polyurethane painted engine room and bilges
- Water pickup sea chests with custom composite serviceable external screens, new 2018

- Discharge sea chests port and starboard, also one forward
- All A/C seawater flows re routed to waterline discharge
- Engine mounted start and stop switches and hour meters
- Cruisair Air Conditioning with reverse cycle heating, air handlers in each stateroom, w/ SMX controls in each compartment
- All Air Conditioning sea water fittings changed to composite, schedule 80, New composite industrial sea water pumps port and starboard
- Headhunter lift system in engine room to service master and aft head
- Holding tank with Headhunter AC sewage pump, plumbed for dockside pump-out with a 3/4 full display and alarm as part of the Hatteras monitor, also do not flush warning lights located at each head (330 gallons)
- Fiberglass water tanks (300 gallons total, 150 port, 150 strb)
- Fiberglass gray water tank (185 gallons)
- 2 x Headhunter Mach 5 AC freshwater pumps
- 28 gallon hot water heater, engine room
- 20 gallon hot water heater, forward bilge compartment
- Headhunter puffer pressure accumulator tanks around boat
- Engine room freshwater hose and air hose mounted by door
- FCI Water Maker - Max Q - 1800 GPD, 365hrs, new membranes 2017
- Village Marine Water - 800 GPD, 178hrs, new membranes 2017
- RO of South Florida water filter system, replaced 2018
- Trim Tab, custom Hatteras in prop tunnels
- 24V automatic bilge pumps w/heavy-duty float switches throughout boat
- Protruded fiberglass rudder shelf with stainless steel rudder tie bar
- Custom workbench / tool boxes, stainless tool chests with custom feet, custom tops and vice. Magnetic tool storage holders above
- Carpeted engine room
- Added Sea strainers on main engines and generators
- Galley sink Y-valve and grease trap tank

Electrical System

- (2) 27.5kw Caterpillar Generators with shock mounts, water / air separator mufflers and sound shields. - 2787hrs port, 2782hrs strb
- U.L. 1426 listed tin coated wiring with insulation. Runs are cable tied every 6 inches and fastened to the hull or bulkheads every 12-16 inches with chafe protected guides.
- (2) 100 amp Glendinning retractable shore cords, bow
- (2) isolation transformers in forward bilge
- Two 24 volt battery banks of heavy duty, 12 volt marine batteries (4) mounted in fire retardant fiberglass boxes
- Mastervolt 75 amp 24V automatic battery charger
- Battery paralleling system with switch at helm
- GFCI protected outlets throughout the vessel

Exterior Finish and Construction

Hatteras Yachts are built with solid fiberglass below the waterline and a closed cell foam core above utilizing resin-infusion which provides a more uniform hull thickness and an ideal resin to glass ratio. There is no organic material used in the structure of their yachts which is one of the reasons Hatteras Yachts are noted for their longevity, ease of maintenance and resale. Unlike most of the competition, Hatteras applies a painted finish in Alexseal Cloud White to their hull and topsides. Although this is a more expensive way of building, the finish is far superior to

gelcoat and will hold its gloss for a much longer period of time with less maintenance.

- Blister resistant vinylester resin hull bottom
- Ablative Anti-Foulant Bottom Paint
- Polyurethane painted non skid decks with polymeric beads
- Resin infused solid fiberglass hull bottom
- Resin infused fiberglass stringers
- Steel laminated in stringers at key locations to bolt engine mounts
- Engine room bulkheads and decks of resin-infused composite construction using PVC foam core with layers of fiberglass laminate on each side
- Teak decks under hardtop on flybridge, aft deck, steps to swim platform & boat deck

Maintenance and Upgrades

2019

- All exterior paint surfaces cleaner waxed and waxed
- Engine room detailed, paint touched up, etc

2018

- Replaced Village watermaker hp gauge, misc fittings
- Full oil change on main engines and generators, oil and filters, transmission oil and filters changed, racors and secondary fuel filters replaced on all
- All exterior surfaces professionally polished and waxed, multiple step process
- All teak decks sanded down, detailed and bleached
- Exterior caulking re done around cleats, rubrails, etc
- 3 new underwater lights, lumishore color changing with controller
- Exterior paint touched up around boat in various areas
- New front window cover and engine room vent covers in black mesh
- Life raft annual service
- Fire extinguishers and fixed system serviced
- Replaced all CO2 sensors with new, connected to Hatteras monitor
- Remarked anchor chain at 50' with red
- Replaced seal on stern door
- Replaced davit line
- Replaced galley dishwasher
- Replaced aft washer and dryer unit
- Bottom painted with black ultra cote, prop speed on metal surfaces
- New rudder seals, carbon fiber bearings and rudders reworked, aligned etc.
- Props balanced and serviced
- Shafts balanced and mirror polished inside and around seals
- Balanced and machined shaft couplers
- New shaft seal carriers, seals and spare seals in carriers
- New custom side scoops for port and stbd side sea chests
- Replaced strut bearings with carbon
- Replaced all water pickup scoops
- New custom composite main engine water pickup scoops / screens that open for in water service
- Serviced stabilizers, seals, bearings, and sensors
- Serviced hydraulic cooler and raw water pump
- Serviced bow thruster, new seals, changed gear oil
- Main engine service, new complete aftercoolers, raw water pumps, heat exchangers cleaned, new thermostats, transmission coolers cleaned, valves adjusted, and new turbo coolant bleed valves, paint touched up
- Generators service, new raw water pumps, fresh water pumps, injectors, exhaust elbows, heat exchangers, new

hoses, new belts

- Updated Simrad software
- Updated RTI software and programming on AV system
- Replaced XM tuner for AV system
- Replaced various DirectTV boxes
- Replaced Simrad 4G radar
- Replaced Simrad XM music and weather module
- Replaced AIS Box
- New flybridge stereo and remote
- All interior carpet cleaned
- New interior carpet runners
- Added sea strainers on main engines
- Replaced carbon filter for ships water system
- Serviced and topped off charge on all a/c units

2017

- Serviced tender engine, oil, filters, lower unit and water pump
- New fly bridge Seacrylic enclosure by P&R Canvas FL
- Water maker service on FCI and Village, all new membranes, various fittings, oil, filters, etc.
- New industrial composite a/c sea water pumps, all composite sch 80 plumbing, setup spare pump with union fittings, etc.

2015

- New complete exhausts on both engines

Additional

Extensive spare parts inventory

Exclusions

Personal belongings

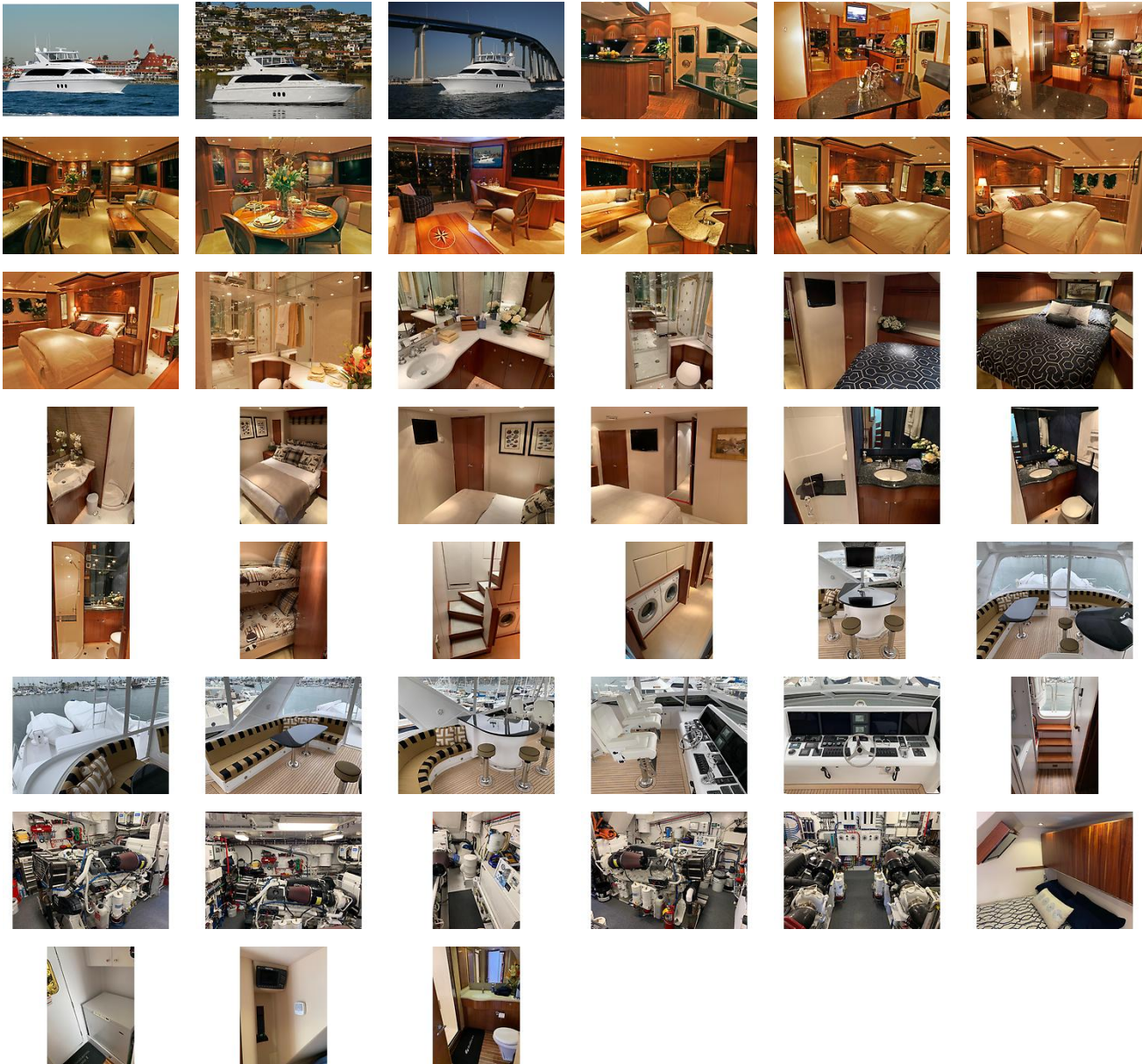
Tools in engine room

While every effort has been made to list all pertinent equipment aboard Miss Sealaneous Expense II, there are some personal belongings aboard. Prospective purchasers should assume any item not specifically mentioned herein will not convey at closing.

Disclaimer

The Company offers the details of this vessel in good faith but cannot guarantee or warrant the accuracy of this information nor warrant the condition of the vessel. A buyer should instruct his agents, or his surveyors, to investigate such details as the buyer desires validated. This vessel is offered subject to prior sale, price change, or withdrawal without notice.

GALLERY



LOCATION MAP



BLAKE OVERSMITH

Stan Miller Yachts

2805 Dickens St., Suite 105

San Diego, CA, US

Office: 619-224-1510

Mobile: (619) 665-7398

blake@stanmiller.com
