
CURT AGEE

Stan Miller Yachts

2600 Newport Blvd Suite 106

Newport Beach, CA, US

Office: 949-675-3467

Mobile: (714) 322-7265

curt@stanmiller.com



2010 Ocean Alexander 88 Motoryacht

Boat Type: Motor Yacht

Address: Newport Beach, CA, US

Price: \$3,350,000



OVERVIEW

Beautiful Ocean Alexander 88 Skylounge with CAT power, three staterooms plus two crew staterooms, upgraded entertainment systems and a world class layout. Call to make arrangements to view.

SPECIFICATIONS

Basic Information

Manufacturer:	Ocean Alexander	Vessel Name:	
Model:	88 Motoryacht	Boat Type:	Motor Yacht
Year:	2010	Hull Material:	Fiberglass
Category:	Power	Hull Type:	
Condition:	Used	Hull Color:	
Location:	Newport Beach, CA, US	Designer:	
Available for sale in U.S. waters:	Yes	Flag of Registry:	

Dimensions & Weight

Length:	88 ft - 26.82 meter	Draft - max:	6 ft - 1.83 meter
LOA:	289 ft - 88.09 meter	Bridge Clearance:	-
Beam:	22 ft - 6.71 meter	Dry Weight:	208000 ft - 63398.4 meter

Engine

Make:	Caterpillar	Engine Type:	Inboard
Model:	C-32	Drive Type:	
Engine(s):	2	Fuel Type:	Diesel
Hours:	1230	Horsepower:	1550 (Individual), 3100 (combined)
Cruise Speed:	18 MPH - 15.64 KTS	Max Speed:	23 MPH - 19.99 KTS
Range:	-	Joystick Control:	No

Tank Capacities

Fuel Tank:	3000 gallons - 1 tank(s)	Holding Tank:	200 gallons - 1 tank(s)
Fresh Water Tank:	650 gallons - 1 tank(s)		

Accommodations

Total Cabins:	3	Crew Cabins:	1
Total Berths:	3	Crew Berths:	1
Total Sleeps:	1	Crew Sleeps:	1
Total Heads:	3	Crew Heads:	1
Captains Cabin:	-		

DESCRIPTIONS

Ocean Alexander 88 Skybridge

Fresh bottom paint, hull detail, August 2018.

Construction

Vinylester resin

Carbon fiber infused composite hull and decks

Longitudinal and lateral FRP stringers filled with high density foam fiberglass, infused, vacuum bagged

Deck, house and bridge with Balsa AL600 sandwich construction, aluminum I-beam reinforced

Interior structural components all bonded to hull

Pyroteck and lead foam sound/vibration insulation

Reinforced collision bulkhead

Airex C70.90 PVC foam sandwich construction above water line

Interprotect epoxy based anti-fouling/anti-osmosis system

White gelcoat on exterior and white non-skid fiberglass decks

Salon and Dining

Custom L-shaped sofa and barrel chairs

Custom formal dining table, chairs

Sapelli paneling and joinery

Custom carpeting and sound insulation

Decorative ceiling

Bottle storage, wine cooler, ice maker

Storage for china and crystal

Entertainment center, Crestron, stereo receiver, LED TV

LED Lighting

Galley

Octoplex systems monitor screen

Maretron Display for depth, rudder, speed, heading, sea temp, time, GPS

Granite counter tops Franke double sink with Seagull water purifier

Gaggenau Electric cook top, oven

SubZero Refrigerator/freezer

JennAir Microwave

Fisher Paykel Dishwasher

Broan Trash compacter

GE Disposal

U-Line Wine cooler

Seagull water purifier

Overhead LED lighting, dish lockers

Dining table and seating

Desk and drawer storage, LCD TV, iPad control, SAT receiver

Skylounge

Stidd Helm chairs (3) with electric controls

Ambient Nav Marine 17" displays, (5)

Furuno NavNet 3D navigation with NEMA 2008

Furuno Radar, 12 Kw with open array antenna

Furuno Class B AIS, integrated with radar and chart plotter

Furuno Digital Sounder with 1Kw broadband transducer

Maretron Display

Icom 604 VHF radio

Simrad AP28 Autopilot

Nobletec PC based Navigation software

KVH HD7 SAT TV Control panel

Cellular signal amplifier

Muir Anchor chain counter (2)

AXIS Camera in engine room and aft deck

Yacht Controller wireless remote for engines and thrusters

Glendinning wired remote for engines and thrusters

Entertainment center with Sony TV, iPad control, SAT receiver

Raised settee and table

Day head and sink

Cabinet with refrigerator, wet bar, wine cooler
LED Lighting
Access door to aft deck, dinghy, davit, seating and BBQ

Staterooms

Sapelli Paneling and joinery
His and hers master head with shower
Custom carpeting and sound barrier
Custom headboards
Custom HMC Mattresses, master – king bed, guest – queen beds
Entertainment center with LCD TV's, iPad control, SAT receivers
Maretron Display
LED lighting
Drawer storage and cedar lined hanging lockers
Ensuite heads with granite flooring
Tecma heads, Grohe faucets, Keuco fixtures, extraction fans

Crews Quarters

Octoplex systems monitor screen
Maretron Display
Captain's stateroom with Sapelli paneling and joinery
Crew port and starboard bunks
Galley with microwave and refrigerator
Amtico Flooring
LED lighting
Storage locker
LED TV, SAT TV
Maytag stacked washer/dryer

Electrical System

Northern Lights 30 Kw Generators, (2) with sound shields
100 Amp Shorepower recepticals, (2) with Cablemaster
100 Amp/50 Amp Splitter
24 Volt Electrical system
C-Power ISO-Boost for shorepower (2)
Mastervolt 4000Watt Inverter
Octoplex Systems monitor, (3)
GFCI AC duplex dedicated recepticals
Service battery switches, battery parallel switching

Engine Room and Bilge

Caterpillar Engine start/stop, gauges
Caterpillar 1000 hour service
Cruisair Chilled water system air conditioning, (Reverse Cycle) high volume pumps
Delta "T" System engine room intake/exhaust ventilation with fire control
Dedicated engine room air conditioning
Fire suppression control system
Power steering
Sea Recovery water maker, 900 GPD
Headhunter Mach 5 Fresh water system with back-up 24V pump
Sight gauges on fuel, water, hydraulic tanks
Ronco holding tank, 400 Gallons total, plumbed dockside for overboard discharge
Raritan blackwater treatment
Auto/manual bilge pumps with high water alarms
Water drop type exhaust for generators
Key Power hydraulic bow and stern thrusters, PTO from engines
Key Power hydraulic fin stabilizers
AC/DC lighting

Lube oil change system for engines and generator, 45 gallon tank
Nibral props and heavy duty AquaMet 22HS shafts
Underwater engine exhausts
Stainless steel rudders with dripless seals
Copper strapped secured bonding system throughout vessel
Engine room and machinery space painted with LP paint
Stainless steel hand rails and stainless steel engine mounting plates in engine room
Fresh water outlet in engine room
Dual Racor Fuel filters for engines and generators

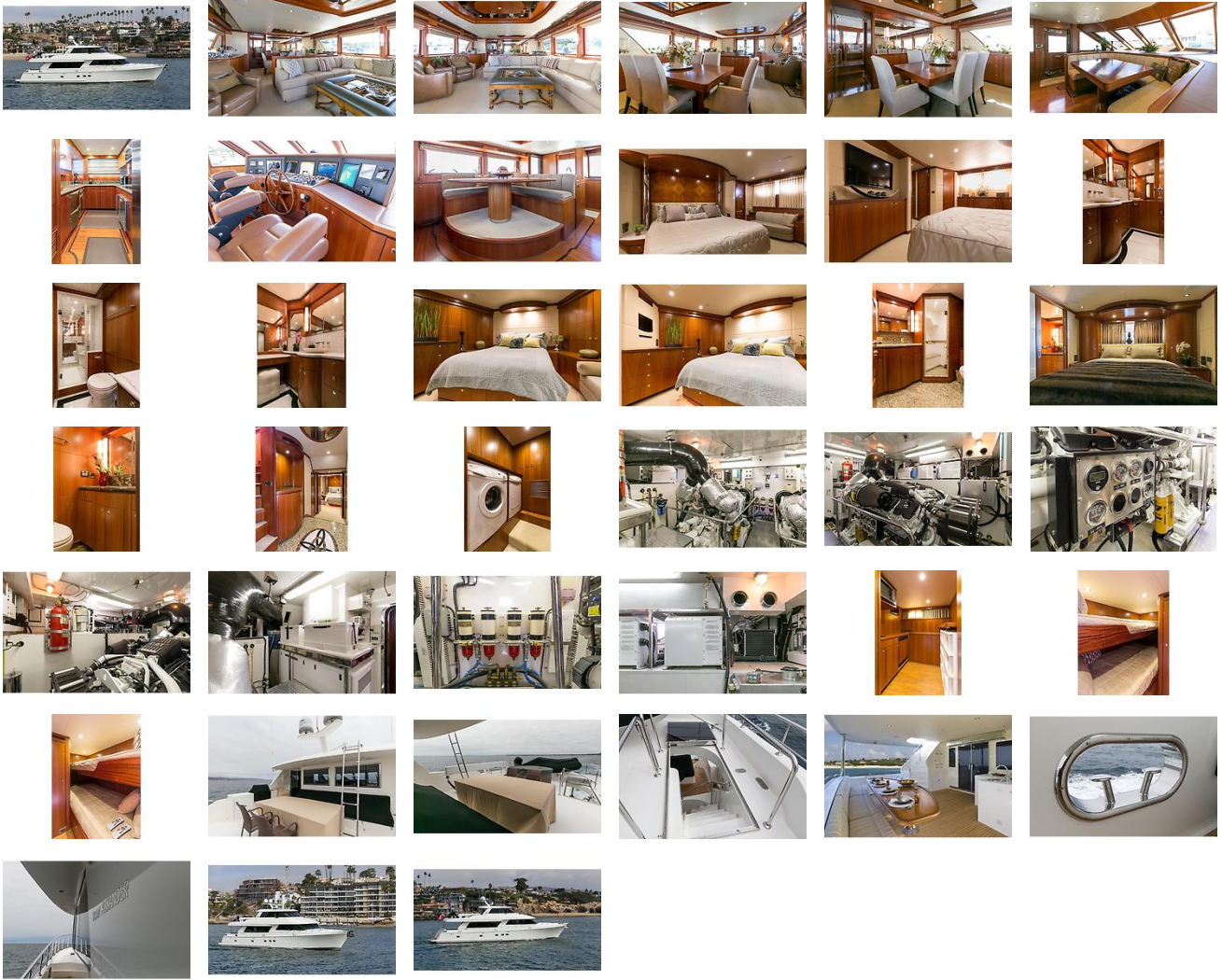
Exterior Features

Underwater lights (4)
Integrated swim platform covered in teak, teak steps and teak California deck
Dockside water inlet on swim platform, hot and cold shower, folding swim ladder
Transom door access to crew quarters and engine room
Fiberglass stairway access to flybridge
Additional engine room and crew quarter access from aft deck down stairwell
Large stainless steel doors, electric, into salon
Large aft deck custom table and seating
Wet bar, refrigerator, ice maker and dry storage on aft deck
Aft deck Muir VC2500 winches (2), stainless steel cleats
Side boarding gates and access to bow on teak decks, stainless steel handrails
Reinforced anchor platform and anchoring system
Integral bow roller and chain stopper with Muir VRC4000C hydraulic windlass
Stainless steel 140# CQR anchors (2)
Salt and fresh water wash downs, bow
Steelhead CT3000 davit
Novurania 14" RIB with Yamaha 60, 4-stroke outboard
Outdoor seating area with Sunbrella covered cushions
Givens 6-man life raft, (2)
Ladder to top of skybridge for maintenance, cleaning
Outdoor BBQ, sink
Phantom, fold away screen door to pilot house

Disclaimer

Owner's personal effects not included in vessel sale. The Company offers the details of this vessel in good faith but cannot guarantee or warrant the accuracy of this information nor warrant the condition of the vessel. A buyer should instruct his agents, or his surveyors, to investigate such details as the buyer desires validated. This vessel is offered subject to prior sale, price change, or withdrawal without notice.

GALLERY



LOCATION MAP



CURT AGEE

Stan Miller Yachts

2600 Newport Blvd Suite 106

Newport Beach, CA, US

Office: 949-675-3467

Mobile: (714) 322-7265

curt@stanmiller.com

