

---

**MASTER ADMIN**  
**Stan Miller Yachts**  
245 Marina Drive  
Long Beach, CA, US  
Office: 562-598-9433  
Mobile: 855.922.4877  
grandbanksnw@gmail.com

---

# 2018 Sabre 42 Salon Express

Boat Type: Downeast

Address: Long Beach, CA, US

Price: [Upon Request](#)



## OVERVIEW

### **IN STOCK - SOUTHERN CALIFORNIA!**

***Contact Your Preferred SMY Location for More Info***

The Sabre 42 Salon Express is the perfect express cruising yacht for the West Coast. She's big enough to provide comfortable overnight accommodation but sized for easy moorage, docking and maneuverability - even if you're single handing the boat.

Equipped with twin 370hp Volvo D6 engines, with IPS 500 pod drives, she delivers comfortable cruising speeds in the mid to upper 20 knot range.

A two stateroom, single head layout is diverse - great for couples cruising solo, families, or two couples.

### **Onboard Highlights and Upgrades:**

- Optional 370hp Volvo D6 engines with IPS 500 pod drives
- 9kW Onan generator and optional 2800W inverter/battery charger
- Dealer-installed electronics package
- Reverso oil change system
- MarineAir reverse cycle AC/heat
- Molded fiberglass electronics mast
- Twin Stidd helmseats
- Seagull water purifier at galley
- Fresh water washdown forward
- Entertainment package with (3) LED TVs, Fusion stereo and speakers
- Glendinning Cablemaster cord retractor
- Decor package with bedding and towels
- Sport Yacht White Hull

*Please note, some photos in this listing are of a sistership and may depict options not included in the actual vessel for sale. Interior photos, detailed exterior photos and engine room photos are from the actual in-stock boat for sale. Exterior shots are of a sistership.*

**Contact your preferred California Stan Miller Yachts office for more information.**

Long Beach: (562) 598-9433

Newport Beach: (949) 675-3467

San Diego: (619) 224-1510

## SPECIFICATIONS

### Basic Information

Manufacturer:	Sabre	Vessel Name:	
Model:	42 Salon Express	Boat Type:	Downeast
Year:	2018	Hull Material:	Fiberglass
Category:	Power	Hull Type:	
Condition:	New	Hull Color:	
Location:	Long Beach, CA, US	Designer:	Sabre Design Team
Available for sale in U.S. waters:	Yes	Flag of Registry:	

### Dimensions & Weight

Length:	42 ft - 12.8 meter	Draft - max:	3 ft 4 in - 1.01 meter
LOA:	-	Bridge Clearance:	-
Beam:	14 ft - 4.27 meter	Dry Weight:	26000 ft - 7924.8 meter

### Engine

Make:	Volvo	Engine Type:	Inboard
Model:	D6 w/IPS 500	Drive Type:	Pod Drive
Engine(s):	2	Fuel Type:	Diesel
Hours:	-	Horsepower:	370 (Individual), 740 (combined)
Cruise Speed:	31 MPH - 26.94 KTS	Max Speed:	-
Range:	-	Joystick Control:	No

## Tank Capacities

Fuel Tank:	380 gallons - 1 tank(s)	Holding Tank:	60 gallons - 1 tank(s)
Fresh Water Tank:	140 gallons - 1 tank(s)		

## Accommodations

Total Cabins:	2	Crew Cabins:	1
Total Berths:	-	Crew Berths:	1
Total Sleeps:	1	Crew Sleeps:	1
Total Heads:	1	Crew Heads:	1
Captains Cabin:	-		

## DESCRIPTIONS

### Vessel Walkthrough

Welcome Aboard! The Sabre 42 Salon Express is a wonderfully designed, beautiful cruising yacht, perfect for a family or couple. A large cockpit provides a natural gathering place, with plenty of comfortable seating and sweeping views. A removable table stows out of sight, when not in use. Moving forward and up two steps, you enter the salon and helm deck. An L-shaped settee (with storage) and an adjustable table provide a place to dine, enjoy a cocktail or simply socialize. To starboard is a straight settee and pop-up TV.

Forward of the settees is the helm station, anchored by twin Stidd helm seats. The helm layout is functional and simple, for easy operation. A door to starboard allows for quick egress to the side deck.

Forward and down a step is the mid-level galley. Bright and open to the windows of the helm deck, the galley is very efficiently laid out - easy to use, without taking up a large footprint.

Down three steps and forward of the galley are the two staterooms and shared head. The owner's stateroom is forward, but unlike many similar layouts, the berth is low and easy to get into and out of. Plenty of lockers and storage options abound, and there is ensuite access to the head. The guest stateroom is to starboard, and features a double berth and storage. Access to the head is directly off the companionway.

Outside, Sabre's hallmarks abound - sturdy handrails and wide side decks provide safe, comfortable passage forward. Anti-skid provides for even more comfort and security. The Sabre 42 Salon Express is a beautiful combination of form, functionality and performance.

### General Features:

- Reverse cycle A/C and heat system - 3 zone
- Varnished cherry interior woods
- Teak and holly sole throughout, excluding Galley (Bird's Eye Maple)
- Screens on all opening ports
- Screens/blinds on deck hatches
- Dovetailed maple drawer boxes

### Hull

- Modified deep vee planing hull with shallow pod drive tunnels
- ISO NPG gelcoat with vinlester back-up resin: Sport Yacht White
- Bottom, topsides and transom VIP Resin infused biaxial e-glass with Corecell SAN foam core
- Stringer system with biaxial e-glass with foam core

- VIP Resin-infused swim platform with molded in anti-skid surface and under mounted swim ladder
- Hull side rubbing strakes
- Rub rail, bang rail and swim platform rails with stainless steel hollow back
- Painted double boot top: Flag Blue
- Gold recessed cove stripe

### **Deck and Hardtop**

- ISO NPG gelcoat
- VIP resin infused biaxial e-glass with balsa core
- Anti-skid for fore and side decks, cockpit, coamings and recessed area of swim platform, color: Smoke
- Sliding windows in salon and cabin sides
- Drop down windows in salon aft bulkhead
- Hinged access door to side deck, at helm
- Flush transom door
- Anchor locker
- Lazarette hatch with gas struts and compression latches
- Hand rails at each corner of cockpit coaming
- Engine room access hatch in main salon with compression latch
- Stainless steel bi-fold aft salon door
- 1.25" stainless steel perimeter rails
- Stainless steel cleats, chocks and hawse pipes
- Stainless steel bow pulpit with dual anchor roller
- Anchor windlass, electric
- (3) Lewmar low profile polished aluminum hatches, with screens
- (6) stainless steel opening portlights
- Teak toe rails
- Teak cabin side eyebrow
- Burgee staff on bow pulpit
- Flagstaff and socket on taffrail
- Raw water washdown at bow
- Fresh water washdown at bow
- Transom shower - hot and cold water
- FRP molded electronics mast, for salon hardtop
- Comrod 4#39; VHF antenna (installed at SMY)
- Airmar B258 1KW transducer (installed at SMY)
- Garmin GSD 24 Advanced Sonar Module (installed at SMY)
- Cockpit seating with cushions. Upholstery: Ultraleather IO Stone
- Cockpit table

### **Propulsion, Engine Room and Tankage**

- Twin 370hp Volvo D6 engines with IPS 500 pod drives (upgraded engines)
- Volvo automatic interceptor trim tabs
- Volvo active corrosion protection
- Dynamic positioning system
- (2) exhaust bypass mufflers
- Engine room blower and vent ducts
- Mylar face foam noise barrier
- (2) 190 USG diesel fuel tanks port and starboard (total capacity 380 USG)
- Racor fuel filters
- (2) diesel deck fills
- 11 USG hot water heater, operates on 110VAC or engine heat
- Temp control valve on hot water supply
- Hot and cold water pressure system (12V)

- Polyethylene holding tank - 60 USG
- Diaphragm waste pump on holding tank
- Automatic fire extinguishing discharge system in engine space, with override
- Reverso oil change system

## **Electrical**

- Onan 9kW generator with soundshield
- 2800W inverter / battery charger, with remote control
- 75' shore power cord - 50 amp
- Glendinning Cablemaster cord reel system
- Isolation transformer
- Digital AC system monitor
- (1) 120V outlet in each cabin, (1) in engine room
- Two AGM Group 31 dedicated engine start batteries
- Two AGM 4D deep cycle ship service batteries
- One AGM group 24 generator start battery
- Remote control battery switches with controls at helm
- Manual emergency battery crossover switch
- Digital battery monitor
- LED lighting: cabins, overhead, strip lighting, engine room and cockpit courtesy lights
- Marine grade tinned wiring throughout
- 12VDC USB charging station at helm and in all cabins
- Additional dimmer switches in the galley, forward cabin and cockpit

## **Plumbing**

- Polyethylene 140 USG water tank
- Jabsco Quiet Flush marine sanitation device with holding tank and macerator
- Marelon sea valves on all thru-hull fittings below water line
- (3) automatic 12V bilge pumps
- (3) high water switches and alarm
- Shore water inlet, with filter

## **Salon, Helm Deck and Electronics**

- Stazo custom teak steering wheel with tilt helm
- (2) 8617 Volvo multi-function displays with Garmin SD card reader
- Garmin 24xHD 24" radome 4kW high-definition radar (installed at SMY)
- Icom VHF marine radio (installed at SMY)
- Autopilot incorporated into Volvo helm displays
- Joystick driving at helm
- (2) Stidd N-Series single helmseats (Upholstery: Ultraleather - Uccello Beeswax)
- Triple windshield wipers with washers
- Ritchie compass
- L-settee to port with storage and tool drawer
- Folding table with hi-low pedestal. Lowers to coffee table height
- End table to stbd
- 32" flat screen LED TV on lift (end table)
- Starboard settee with storage
- Fusion stereo system with speakers in salon and cockpit
- Blinds on side windows and side door
- Settee fabric: Ultraleather - Uccello Husk

## **Accommodations**

### **Owner's Stateroom:**

- Island berth with drawer storage underneath
- Cherry hull ceilings
- Bureau with locker and shelving
- Upper lockers with louvered doors
- 19" flat screen TV and DVD player
- Cedar lined hanging locker
- Teak and holly sole
- Sound deadening soft headliner panels
- Pocket door
- Oceanair Decor Package, including bedding, sheets and towels

### **Guest Stateroom:**

- Double berth with drawer storage underneath
- Cherry hull ceilings
- Forward bulkhead storage locker and shelf
- Nightstand with drawers
- Teak and holly sole
- Pocket doors
- Sound deadening soft headliner panels
- Surface mounted LED TV

### **Head:**

- Jabsco Quiet Flush head
- Stainless steel undermount sink
- Shower stall with seat and locker outboard
- Electric sump pump for shower
- Storage lockers
- Solid surface countertop. Color: Silver Birch
- Towel bar
- Ventilation blower
- Mirror

### **Galley**

- Solid surface countertop - Color: Silver Birch
- Galley sole: Bird's Eye Maple
- Vitrefrigo 2-drawer refrigeration with stainless steel doors
- Isotherm 1-drawer freezer with stainless steel door
- Two burner touch control electric cooktop
- Undermount stainless steel sink with Scandvik faucet
- Seagull water purifier on galley cold water, with separate spigot
- Convection microwave
- Storage cabinets and drawers
- Built-in waste basket

### **Disclaimer**

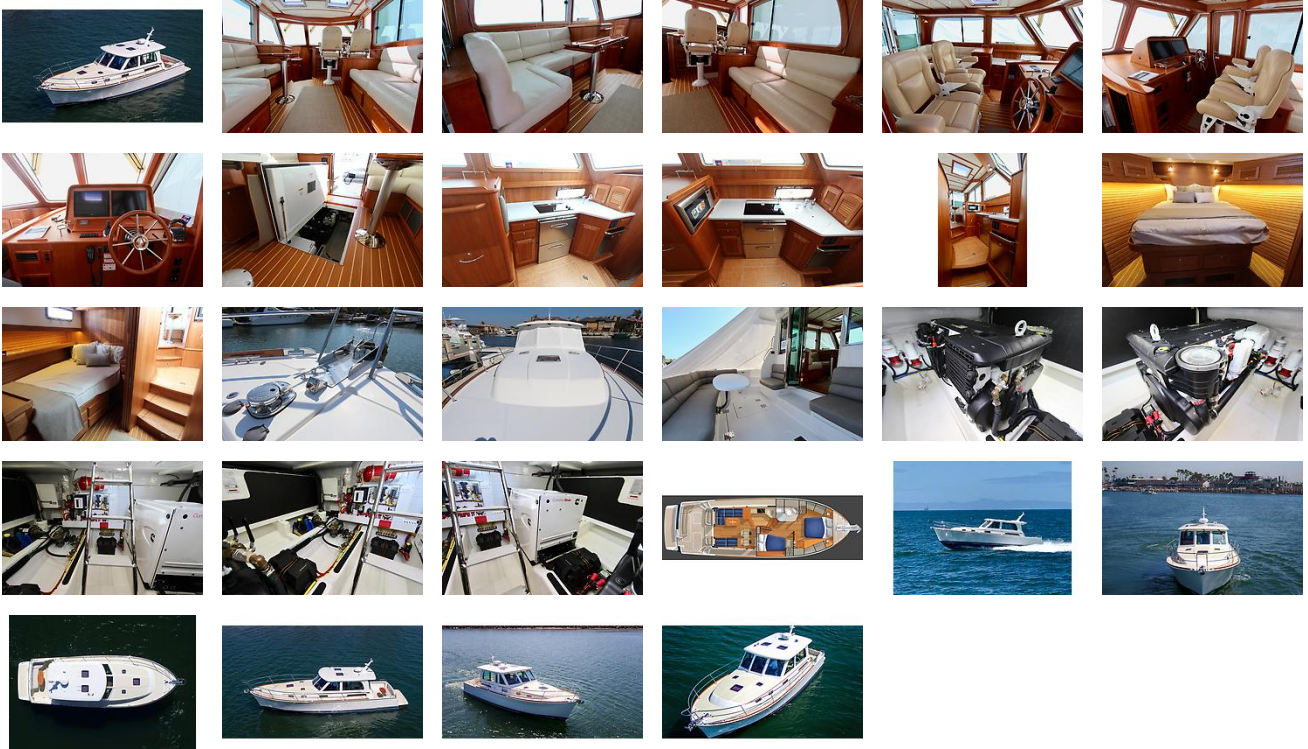
The Company offers the details of this vessel in good faith but cannot guarantee or warrant the accuracy of this information nor warrant the condition of the vessel. A buyer should instruct his agents, or his surveyors, to investigate such details as the buyer desires validated. This vessel is offered subject to prior sale, price change, or

withdrawal without notice.

## External Links

- [Manufacturer Website](#)Manufacturer Website

## GALLERY



## LOCATION MAP



**MASTER ADMIN**  
**Stan Miller Yachts**  
245 Marina Drive  
Long Beach, CA, US  
Office: 562-598-9433  
Mobile: 855.922.4877  
grandbanksnw@gmail.com